

## BX-O1

### Output module for SecuriLine eXtended

Beginning with edition number 20-2100015-01-01

The BX-O1 has a potential-free relay output for switching loads of up to 2 A and up to 230 V.

It meets the SecuriLine eXtended specification for operation on the addressable loop of the SecuriFire fire detection system.



**Fig. 1 BX-O1**

### Description

The BX-O1 can be connected to the SecuriLine eXtended addressable loop of the SecuriFire fire detection system.

The BX-O1 has a potential-free relay output for switching loads of up to 2 A and up to 230 V.

An "Fail safe position" can be programmed for the output in the event of loop voltage failure.

The relay outputs are suitable for outputting pulses.

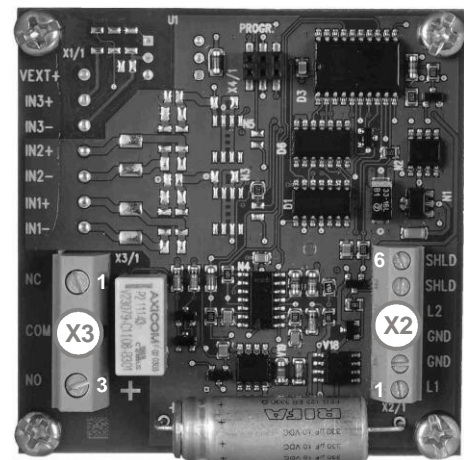
Addressing and parameter assignment for the BX-O1 is performed with PC software via the fire alarm control panel.

The module includes a short-circuit isolator. In the event of wire breakage or a short-circuit, this functionality ensures that the fault is localised and at the same time maintains the full operability of the addressable loop.

### BX-O1 features

- Power supply via the X-LINE
- Addressing and parameter assignment with PC software via X-LINE
- Up to 62 modules can be connected per loop
- 1 output, change-over contact 230V / 2A
- Fail safe position of the relay output if there is a voltage supply failure
- Integrated short circuit isolator
- Robust plastic housing

### Interfaces



**Fig. 2 BX-O1 interfaces**

#### SecuriLine eXtended (X2)

Terminal	Designation	Description
1	L1	Data A
2	GND	GND A
3	GND	GND B
4	L2	Data B
5	SHLD	Screen support point
6	SHLD	Screen support point

#### Relay output (X3)

Terminal	Designation	Description
1	NC	Normally closed
2	COM	Common
3	NO	Normally open

# Data Sheet

## Power requirement

When both detectors and modules are operated on an addressable loop, note that the BX-O1 has a higher power consumption than a detector. For security reasons a maximum of 62 BX-O1s are permitted per addressable loop.

A tool is available for calculating the maximum possible loop length and the maximum number of participants.

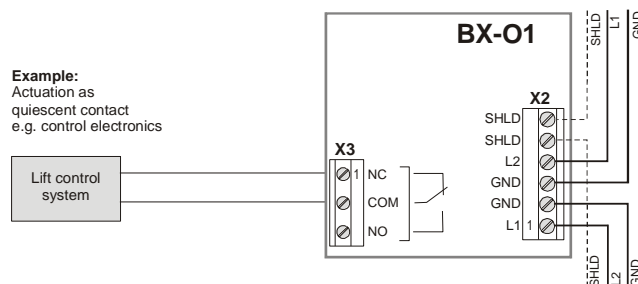
## Connection example



### Notice

When laying a 230 V power cable, make sure that it is not conveyed directly over the electronics of the module.

### Connection output module BX-O1



## Article numbers / spare parts

Short designation	Swiss art. number	Art. number
Output module BX-O1	--	20-2100015-01-02
Map case IP66 for BX-O1	403.239 917	FG020234
M20 step nipple	428.242 578	MM000181

## Technical data

Function	Output module	
Operating voltage	12 to 30	VDC
Power consumption (module's power consumption only)	0.48	mA
Signal transmission	Serial data transmission, 2-line technology	
Protection type	66 with map case	IP
Ambient temperature	-20 to +60	-°C
Connection	Screw terminals max. 1.5	mm <sup>2</sup>
VdS approval	G212024	
EU certificate of conformity (EN 54-17/18)	0786-CPD-21144	
Dimensions (H x W x D)	67 x 67 x 20	mm
Dimensions with map case (H x W x D)	94 x 94 x 81	mm

### Relay outputs

Relay	1	
Relay	Bistable, one coil	
Type of contact	Change-over contact	
Switching voltage	230	V
Switching current	0.1 – 2000	mA
Breaking capacity	60 (0.25 A @ 230 V)	W
Switching frequency	max. 3.125	Hz
	200ms to 25s in 100ms steps	
Connection	Screw terminals max. 2.5	mm <sup>2</sup>